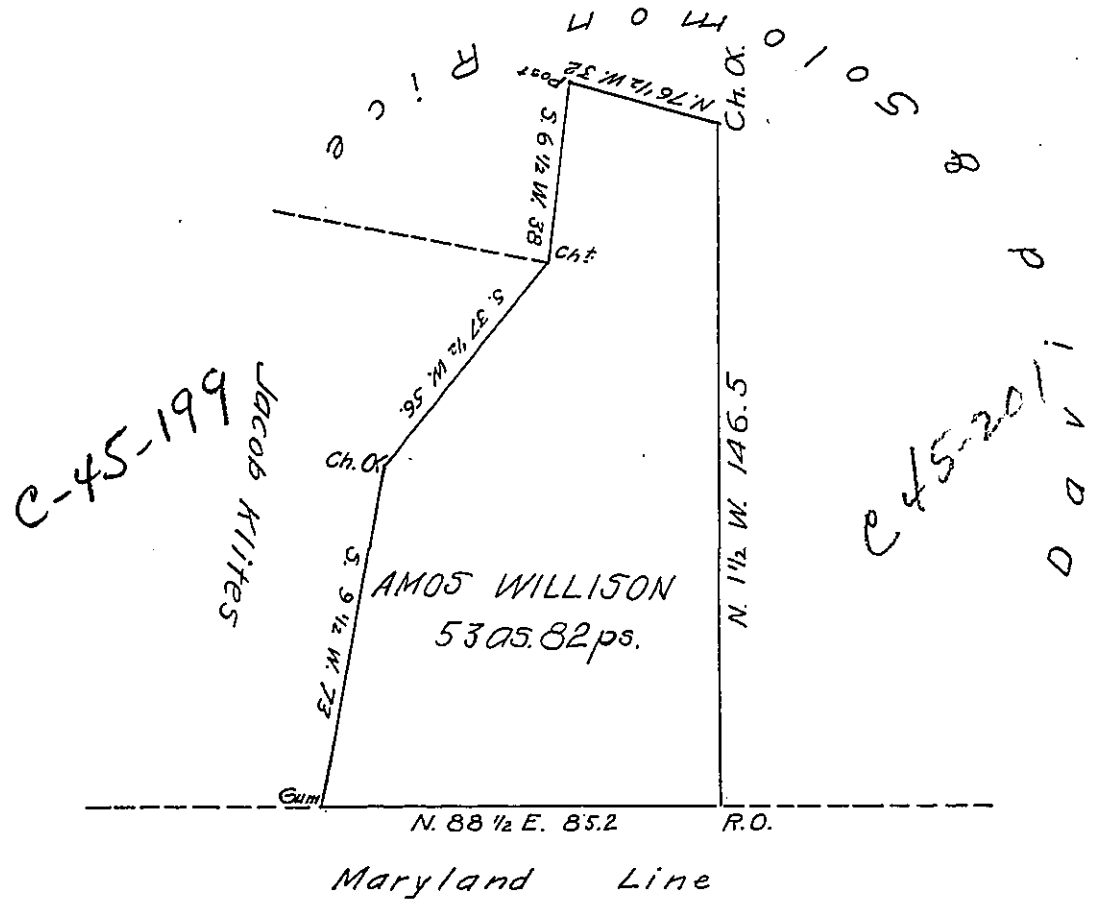


C-45-201



Situate on the North-west side of Martins mountain in Southampton township Bedford county containing 53 acres 82 perches and allowance of 6 per cent for roads, &c. Surveyed by Parick Donohoe Esq. the 20th of April, 1853, in pursuance of a warrant granted to Amos Willison for 50 acres, on the 21st of March 1853. Courses according to the true bearings.

To J. Porter Brawley, Esq. }
 Surveyor General. }

Daniel Sams, C.S.

IN TESTIMONY that the above is a copy of the original remaining on file in the Department of Internal Affairs of Pennsylvania, made conformably to an Act of Assembly approved the 16th day of February 1833, I have hereunto set my hand and caused the Seal of said Department to be affixed at Harrisburg, this 18th day of June, 1907.

Henry Howell
 Secretary of Internal Affairs.